

SOLVE FOR X.

***Selecting the correct
BULKPAK® solution for your
supply chain***

Sean Momsen,

Product Manager – ORBIS corporation

BULKPAK®
We put more into it.



PROMAT | 2017

McCormick Place | Chicago
April 3-6, 2017
promatshow.com

powered by  MHI

SOLVE FOR X.

Factors of
Packaging Selection

BULKPAK®
Innovations

Protecting Assets

Total Cost of
Ownership

Overview

SOLVE FOR X.

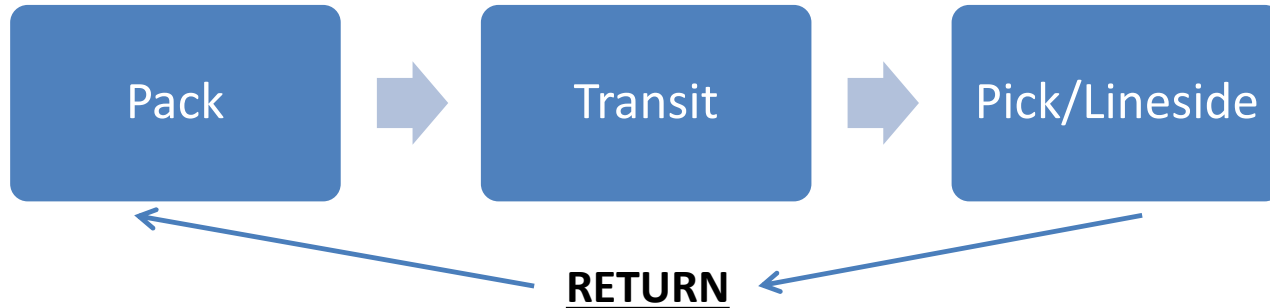
Factors of
Packaging Selection

BULKPAK®
Innovations

Protecting Assets

Total Cost of
Ownership

SUPPLY CHAIN



PART

DENSITY

VELOCITY

SOLVE FOR X.

Factors of Packaging Selection

- Regional footprint and line side space

BULPAK® Innovations

Protecting Assets

Total Cost of Ownership



1200mm x 1000mm and
1200mm x 800



48" x 45"



78" x 48"

SOLVE FOR X.

Factors of
Packaging Selection

BULKPAK®
Innovations

Protecting Assets

Total Cost of
Ownership

- Ergonomics



SOLVE FOR X.

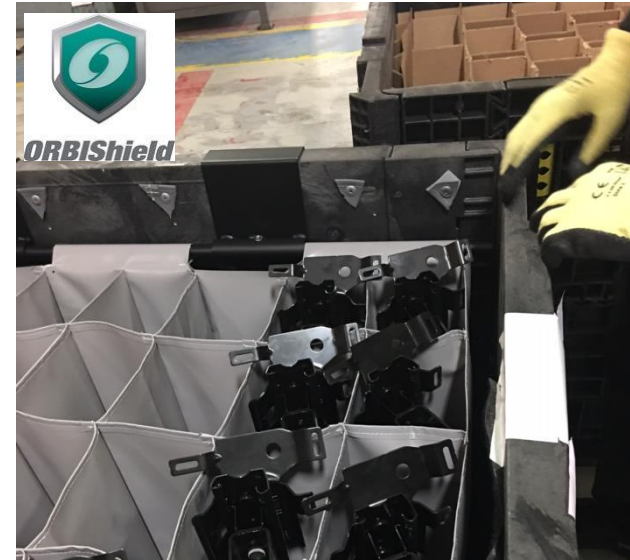
Factors of Packaging Selection

BULKPAK® Innovations

Protecting Assets

Total Cost of Ownership

- Pack Density/Collapsible Fabric Dunnage



SOLVE FOR X.

Factors of
Packaging Selection

BULKPAK®
Innovations

Protecting Assets

Total Cost of
Ownership

SOLVE FOR X.

Factors of Packaging Selection

BULPAK® Innovations

Protecting Assets

Total Cost of Ownership

- 2010 high efficiency container

Typical 4845-34

(48x45, 26 positions, 8 high return)

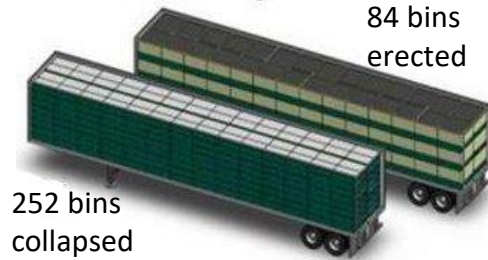
78 bins
erected



ORBIS HDMC4845-34

(48x44.5, 28 positions, 9 high return)

84 bins
erected



- 7 year experience
- Industry first innovation
- Logistics \$\$\$

SOLVE FOR X.

Factors of Packaging Selection

BULKPAK® Innovations

Protecting Assets

Total Cost of Ownership

Benefits:

- 30" x 16" profile and fork truck entry on all four sides delivers versatility to the line
- Better use of internal capacity optimizes the amount of parts delivered to the line
- Long service life in rugged conditions

Applications:

- Metal stampings
- Industrial hosing



Container Specifications (Upper Dimensions: English, Lower Dimensions: Metric)

Model	Outside Dimensions			Inside Dimensions		Product Clearance (F)	Container Capacity (lb.)	Weight (lb.)	Internal Volume (cu. ft.)	Maximum Loaded Stack	
	L (A)	W (B)	H (C)	L (D)	W (E)					Static	Dynamic
HDRS3016-19 BulkTote	30.0	16.0	19.2	27.1	13.4	11.0	500	30.0	2.23	4 high	2 high
	762.0	406.4	487.7	688.3	340.4	279.4	226.0	13.6	0.06m³	N/A	N/A

SOLVE FOR X.

Factors of Packaging Selection

BULPAK® Innovations

Protecting Assets

Total Cost of Ownership

- True 4 door 4845 and Ext. height



SOLVE FOR X.

Factors of
Packaging Selection

BULKPAK®
Innovations

Protecting Assets

Total Cost of
Ownership

SOLVE FOR X.

Factors of Packaging Selection

BULKPAK® Innovations

Protecting Assets

Total Cost of Ownership

- Damage Identification

Sidewall Wrap Around
Stacked Impact



Do you have an inspection process in your loop?

SOLVE FOR X.

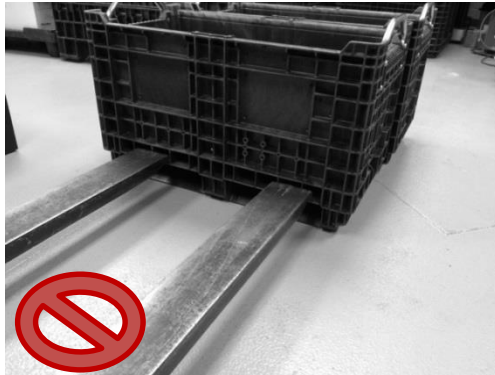
Factors of Packaging Selection

BULKPAK® Innovations

Protecting Assets

Total Cost of Ownership

- Handling training program



Do not push bins with fork tines.
Always lift containers fully before
moving them.

This will help avoid
container/product damage

***** Programs are ineffective without enforcement *****

SOLVE FOR X.

Factors of Packaging Selection

BULPAK® Innovations

Protecting Assets

Total Cost of Ownership

- Easy tracking of assets



SOLVE FOR X.

Factors of
Packaging Selection

BULKPAK®
Innovations

Protecting Assets

Total Cost of
Ownership

SOLVE FOR X.

Factors of Packaging Selection

- Damage rate



BULKPAK® Innovations

Protecting Assets

Total Cost of Ownership

- Replacement rates?
 - Bases
 - Sidewalls
 - Latches/hinges
- Average age of fleet?
- Certain applications breaking more than others?

SOLVE FOR X.

Factors of
Packaging Selection

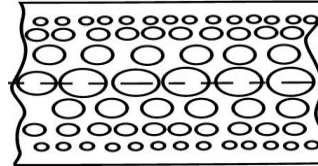
BULKPAK®
Innovations

Protecting Assets

Total Cost of
Ownership



- Nitrogen/Blowing Agent allows for higher wall thickness and lower press tonnage
- Combines a resilient core with a durable surface
- Results in increased weight load capacity, container life and component protection



- Structural Foam

SOLVE FOR X.

Factors of Packaging Selection

BULKPAK® Innovations

Protecting Assets

Total Cost of Ownership

- Robust Components
2 Piece
Spring-Loaded Latches

Heavy Duty Base/Panel Connection

Heavy Duty Base



SOLVE FOR X.

Factors of
Packaging Selection

BULKPAK®
Innovations

Protecting Assets

Total Cost of
Ownership

BULKPAK®
We put more into it.

What Questions Do You Have?